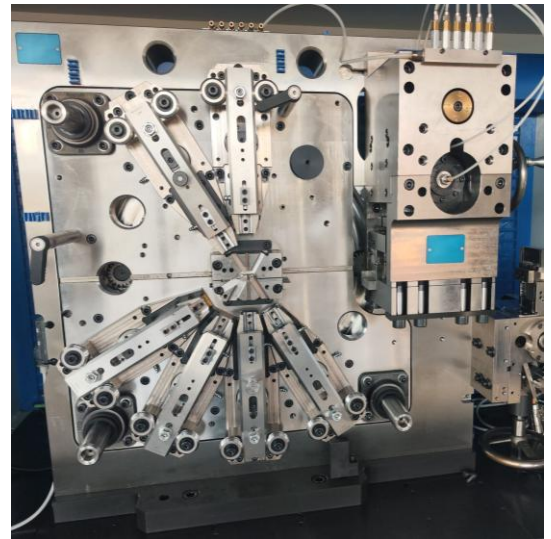


Radialmodul RAM-480-500

Radial module
RAM-480-500

Technische Details zu RAM-480-500 Technical Details for RAM-480-500

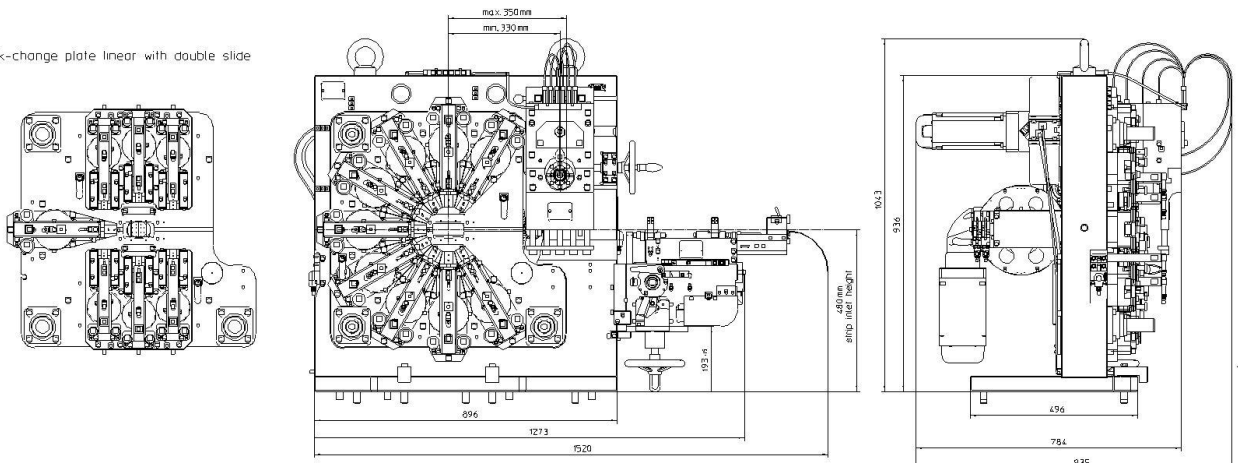
| | |
|---|---|
| Hauptabmessung Dimensions | L1100mm x H1100 x T950mm |
| Gewicht Weight | max. 1500kg |
| Leistung Performance | 300 Hub/min 300 strokes/min |
| Kraft Force | 24kN / Schlitten 24kN / slide |
| Hub Stroke | 0.5mm - 30mm |
| Anzahl Schlitten Number of Slides | 1 - 10 |




Technische Zeichnungen Technical Drawings

module with quick-change plate radial with double slide

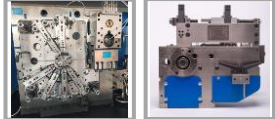
Quick-change plate linear with double slide


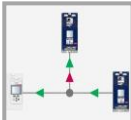



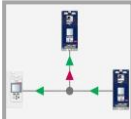

Liefervarianten Delivery options

A  **Modul + Antrieb**
Module + Drive

➔


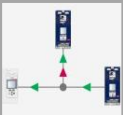


 **Optional:
Mit Einzug**
With feeder

B  +  **Mit SAC (servo axel control)**
Anwendung: Stand-Alone oder einfach in Anlage integrieren
With control in a compact cabinet
Application: Stand-alone or easily integrated into a system

C  +  +  **SBA-500: Die eigenständige Komplettlösung:**
The independent complete solution:

- Sicherheitskonzept / safety concept
- Konzipiert für RAM-500 / designed for RAM-500

Details

|  Modul module A |  SAC Servo axis control B |  SBA-500 C |
|---|---|---|
| <p>Anforderungen an den Servomotor:</p> <ul style="list-style-type: none"> - Min. Drehmoment: 5 Nm - Getriebeflansch Motorspezifisch <p> Opt. Einzug Opt. feeder</p> <p><u>Montageplatte (mounting plate):</u></p> <ul style="list-style-type: none"> - Kurvengesteuerter Zangenvorschub <p><u>Montagewinkel (mounting bracket):</u></p> <ul style="list-style-type: none"> - Pneumatischer Zangenvorschub <p><u>Modultisch (module table):</u></p> <ul style="list-style-type: none"> - Elektronischer Zangenvorschub - Kurvengesteuerter Zangenvorschub | <ul style="list-style-type: none"> - Steuerung wahlweise Sigmatek, Siemens oder Schneider / Control system choice of Sigmatek, Siemens or Schneider - Bis zu 4 Servoachsen können betrieben werden / up to 4 servo axis can be driven - 16 frei programmierbare I/O's / 16 free programmable I/O's - Produktspezifische Parameter werden zentral in der Steuerung verwaltet / Product-specific parameters are managed centrally in the control system | <ul style="list-style-type: none"> - Konzipiert für RAM-500 / designed for RAM-500 - Bis zu 6 Axen können synchron betrieben werden / Up to 4 axes can be operated synchronously - Komplette Schutzeinhausung mit magnetischer Türverriegelung / Complete protective enclosure with magnetic door locking - Bis zu 2 Schweißoperationen können mit unserem WCC ermöglicht werden / Up to 2 welding operations can be enabled with our WCC (siehe Datenblatt / see data sheet) |

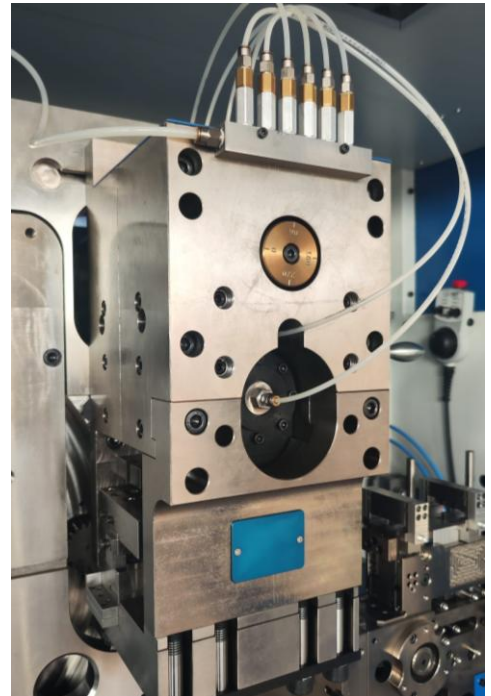


Exzenterpresse EP-80 → RAM-500

Eccentric Press
EP-80 → RAM-500

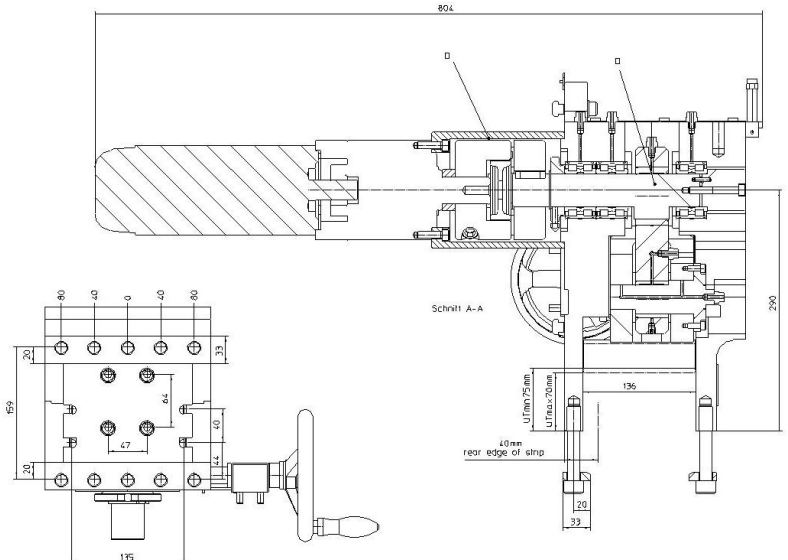
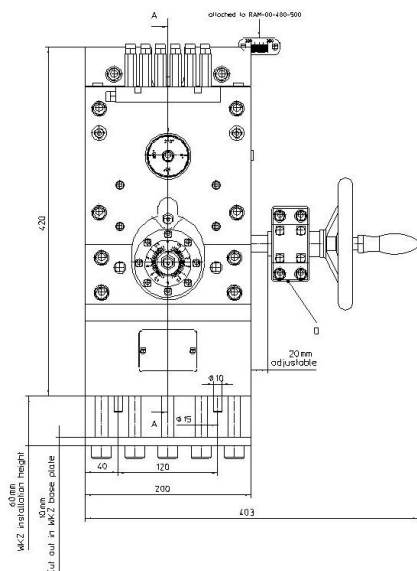
Technische Details zu EP-80 Technical Details for EP-80

| | |
|---|---------------------------------------|
| Hauptabmessung Dimensions | L200mm x H500 x T950mm |
| Gewicht Weight | max. 150kg |
| Leistung Performance | 300 Hub/min 300 strokes/min |
| Kraft Force | 80kN (8t) |
| Hub Stroke | 15mm |
| Hublagen- verstellung Stroke adjustment | 134mm +1mm / -4mm |



Technische Zeichnungen Technical Drawings

mounted on RAM-480-500



Hintere Steuerwelle

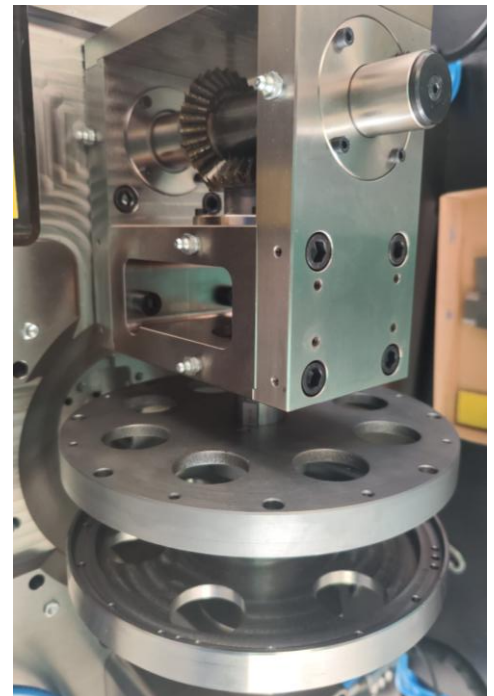
HSTW-100 → RAM-500

Rear Control Shaft
HSTW-100 → RAM-500

Technische Details zu HSTW-100

Technical Details for HSTW-100

| | |
|---|---|
| Hauptabmessung Dimensions | L460mm x H270 x T350mm |
| Gewicht Weight | max. 56kg |
| Leistung Performance | 300 Hub/min 300 strokes/min |
| Kraft Force | 7.5kN forward 2.5kN backward |
| Hub Stroke | 36mm / slide |
| Anzahl Schlitten Number of Slides | 1 - 2 |



Technische Zeichnungen

Technical Drawings

